



Christmas Parties - 2012



Christmasparties.net believe passionately that every festive event should be exceptional and to do that you have to be a little bit different.



We have been leading organisers of Christmas and winter parties since 2002. Whether you're a company or private individual, we have a comprehensive portfolio of venues in London and many more across the rest of the country. We're completely independent and provide unbiased advice whatever your requirements.

Planning a party with us couldn't be easier – whether you're looking for an exclusive/bespoke party or maybe have a smaller number of guests but would like to join a larger shared party, our experienced event organisers will inspire you with a range of spectacular themes and exciting ideas for you to choose from.

Our aim is for this guide to help you understand the range of services, suppliers and venues that we work with in order to deliver Christmas parties of exceptional quality for any size, complexity and budget.

All our events are based around our set of core values:

- CREATIVITY** - A great idea, not just any idea
- EXPERIENCE** - Putting it on, not just pulling it off
- RELATIONSHIPS** - Designing relationships not just building them
- TECHNOLOGY** - Forward doing, not just forward thinking

**0844 567 3736**

**[www.christmasparties.net](http://www.christmasparties.net)**



eight

bell

# ELEGANT DINING



Whether you're looking for sublime sophistication, decadent surroundings or classical elegance, we work with a range of premium restaurants across the capital including Chelsea, West End, the City and Canary Wharf.

Each restaurant we work with offers impeccable service and a range of spectacular international cuisine, that will impress both you and your guests.

The options are limitless, from a chef's table for 6, intimate private dining to exclusive venue use, our offering provides something for all tastes. Below are just a few options.

Almeida Restaurant and Bar - @venue - Bluebird - Blueprint Café  
Butlers Wharf Chop House - Cantina Del Ponte - Coq d'Argent  
Floridita - Kensington Place - Launceston Place - Le Pont de la Tour  
Meza - Orrery - Paternoster Chop House - Plateau - Quaglino's  
Royal Exchange Grand Café - Sartoria - Sauterelle - Skylon  
Bentley's Oyster Bar - Corrigan's Mayfair - Gordon Ramsey at Claridges  
Savoy Grill - The Narrows - Maze - Cantina at Vinopolis



**0844 567 3736**

**[www.christmasparties.net](http://www.christmasparties.net)**



# EXTRAORDINARY LARGE VENUES



For those looking for a larger venue to cater for higher numbers of guests from 300 up to 2,400, Old Billingsgate (pictured opposite) is one of a few spectacular larger venues available for the festive season.

**Grosvenor House Hotel**—In the heart of Mayfair, Grosvenor House has established a long history of delivering memorable events through its exceptional levels of service. As one of the largest banqueting spaces in London, the Grosvenor can entertain up to 2000 for a dinner or reception.



**The Pavillion at the Tower of London**—The Pavilion is a temporary structure, elegantly designed. A fully glazed wall the length of the reception space offers views of the Tower of London. The venue can accommodate a seated dinner for up to 600 guests, and 1000 for a reception.



**Battersea Evolution**—formerly known as Battersea Park Events Arena, this is a purpose built events venue situated in Battersea Park, Central London. Up to 2,500 guests can be comfortably seated for a dinner dance and up to 3,500 for a drinks reception or a theatre-styled seating event. Large space with lots of flexibility.



0844 567 3736

[www.christmasparties.net](http://www.christmasparties.net)



# HISTORICAL LONDON



London is home to many iconic buildings steeped in history, many of which offer versatile event space. Each unique, beautiful and elegant venue never fails to enchant guests as they walk through their doors and are entertained where Kings, Queens and nobility once stood.



[The Natural History Museum](#) provides cathedral-like proportions, vast capacity and intricate decoration. Frequently accommodating guests into its epic hall, it makes for one of the most flexible and dramatic party spaces.



[Gibson Hall](#), located in the heart of the City of London, has impeccable credentials as one of the finest banqueting and conference venues in London. The Hall was one of the City's banking halls, reflecting classical Victorian elegance.



[The Royal Courts of Justice](#) are not for the faint-hearted. With its marble mosaic floor, soaring arches and beautiful stained glass windows, the Great Hall provides the ultimate space for grand dinners, receptions and award ceremonies.

We work closely with our suppliers to offer an all encompassing catering and production service that ensures you will maximise the potential of your chosen venue.

**0844 567 3736**

**[www.christmasparties.net](http://www.christmasparties.net)**



# LATE NIGHTS: BARS AND CLUBS

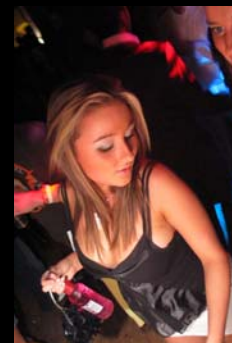


Planning an evening event can be fun, especially when you're spoilt for choice. Christmasparties.net, in conjunction with a selection of prestigious bars and clubs, across London's West End and the City, provide a diverse range of venues for night time entertaining.

- Exclusive venue room hire or semi-exclusive
- Private dining rooms, meeting facilities and themed event spaces
- Capacities from 50 to 2,500 guests
- Wide range of food options including 3-5 course dinners, fork/finger buffets and canapés
- Late night options with some venues open until 3am

Venues include:

Chinawhite - Sketch - Floridita - Jewel Piccadilly - Café de Paris  
Penthouse - Boujis - Aura Mayfair - Koko - Aqua Nueva  
Century Club - Skylon - Ministry of Sound - Pacha - Paramount Club



**0844 567 3736**

**[www.christmasparties.net](http://www.christmasparties.net)**



# ENTERTAINMENT & THEMING



**W**ant to create that WOW factor at your Christmas event?

Adding theming and production to any event certainly leaves guests with a memorable impression. Providing entertainment is also a fantastic way of 'breaking the ice', engaging with an audience or simply as a way of amusing your guests.

There are many ways to entertain and a multitude of themes to consider depending on the outcome you're looking for.

Christmasparties.net have a combined offering of professional event management and party planning services incorporating:-

production - design - consultancy - installation - theming  
music - dance - walkabouts - circus - amusements

For ideas and more information, call for a chat with one of our experienced advisors.

**0844 567 3736**

**[www.christmasparties.net](http://www.christmasparties.net)**



# SHARED PARTY NIGHTS



If you have the task of planning a Christmas Party for a smaller group of work colleagues, friends or even family, joining a Shared party allows you to enjoy the festive fun without all the hard work.

Shared parties are hosted at hundreds of venues across the country, from hotels, restaurants and night-clubs to bespoke venues specifically set up for the occasion.

From the moment you arrive, you and your guests can relax and enjoy the evening along with the other party-goers. Most Shared parties are set up with spectacular theming and can include the following:

- a festive reception drink on arrival
- 3 course meal or similar
- Entertainment such as live music, acrobatic performers, a ride on the dodgems, the casino, and many more
- Disco /dancing

Our choice of Shared parties all have that WOW factor at affordable prices and promise to provide a dazzling Christmas to remember.

**0844 567 3736**

**[www.christmasparties.net](http://www.christmasparties.net)**



---

0844 567 3736

[info@christmasparties.net](mailto:info@christmasparties.net)

[www.christmasparties.net](http://www.christmasparties.net)

Graveson House  
71 Church Road  
Hove, BN3 2BB